

AMES BUSINESS GROUP LLC EQUIPMENT

2416 340TH STREET, KEOKUK, IOWA

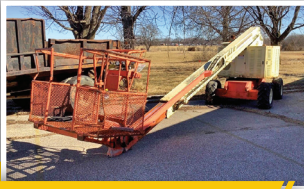
AUCTION

OPENS: TUESDAY, MARCH 7
CLOSES: TUESDAY, MARCH 14 | 4PM CDT 2023

PREVIEW: March 7 from 9AM-4PM / LOADOUT: March 15 from 10AM - 4PM and March 16 from 9AM-4PM



CASE VR-642, 7,020 hrs.



JLG 40HT, 914 hrs.



2000 GMC 6500, 68,761 mi.



1996 GMC TOPKICK, 486,169 mi.



1998 VOLVO WG, day cab



2017 CES/WECO, 18-1/2'x6'



2004 UTILITY, 53'



2004 UTILITY, 53'



1995 MAC-LANDER 25LFF8, 20'



PJ, low pro dump

WES AMES, 319.795.0530

or Jerry Roth of Steffes Group, 319.385.2000 or 319.750.3269

MORE ON REVERSE!

319.385.2000 | SteffesGroup.com

Steffes Group, Inc., 2245 East Bluegrass Road, Mt. Pleasant, IA 52641



TERMS: All items sold as is where is. Payment of cash or check must be made sale day before removal of items. Statements made auction day take precedence over all advertising. \$35 documentation fee applies to all titled vehicles. Titles will be mailed. Canadian buyers need a bank letter or credit to facilitate border transfer.



TELEHANDLER

Case VR-642, 7,020 hrs., 4WD, diesel engine, ROPS, front wheel steer, 48" forks, 42' reach, 14.00-24TG tires, S/N 152467

AERIAL PLATFORM

JLG 40HT, shows 914 hrs., 2WD, 40' reach, 1,000 lb. max capacity, LP, 12.5L-15SL, S/N 0309014311

COMMERCIAL BOILER

1977 Trane, boiler, heating 3,592 sq. ft., water/wall heating surface 605 sq. ft., 18-1/2x13x12-1/2", natural gas, gas train included

OVERHEAD CRANE

2017 CES/WECO, overhead crane, 18-1/2'x6', 2 ton, Laird CT24 machine control unit receiver, Yale 3 phase winch motor, 5 hp., 20 FPM hoist speed, cable winch, 3 phase rail motors, 1/2 hp., 55 FPM trolley speed, model WA3M

DUMP TRUCKS

2000 GMC 6500, 68,761 miles, 7.4L, 5 speed trans., single axle, spring susp., 16'x8' box, 3.5' walls, hyd. brakes, dual 50 gal. fuel tanks, dual cylinder lift, 205" WB, 11R22.5 tires, VIN 1GDG6H1B6YJ906330

1996 GMC Topkick, 486,169 miles, automatic, Caterpillar, diff. lock, air brakes, spring susp., twin screw, Granning air tag, 16' bed, 54" sidewalls, dual 50 gal. fuel tanks, poly lined bed, manual debris cover, AC, 224" WB, 11R22.5 tires, aluminum front wheels, steel rears, VIN 1GDT7H4J1TJ511382

SEMI TRUCK

1998 Volvo WG, day cab, unknown miles due to faulty gauge, Volvo 12.7L engine, Fuller RTX 9 speed, Eaton rear ends, air susp., air slide 5th wheel not working), dual 80 gal. aluminum fuel tanks, wet kit (not working), fiberglass cab visor, heated mirrors, cruise control, 11R22.5 tires, steel wheels, VIN 4VGDAGF7WN860263

TRAILERS

2004 Utility, reefer, 53'x102', sliding tandem, air susp., SS front corners, SS rear doors, Carrier Advance reefer unit (hr. meter not working), VIN 1UYVS25305U504306

2004 Utility, reefer, 53'x102', sliding tandem, air susp., SS rear doors (reefer unit has no compressor), 275/80R22.5 tires, VIN 1UYVS25375U504304

2003 Wabash, dry van, 53'x102', sliding tandem, air susp., SS front corners, SS rear doors (former reefer unit), 11R22.5 tires, VIN 1JJV532W931828665

1995 Mac-Lander 25LFF8, flatbed, 20'x92"+5' tail, tandem axle, single wheels, wood deck, stake pockets, pintle hitch, 12,000 lb. GVWR, VIN 1M9PF252031217299

PJ, low pro dump trailer, 16'x7' box, tandem axle, spring susp., 12v hyd. lift, ST235/80R16 tires

Tilt Bed Car Hauler, 15'x80", tandem axle, single wheels, wood deck, (2) ramps, ST225/75R15 tires, VIN not found

PICKUP TRUCKS

2007 Chevrolet Colorado, shows 146,177 miles, 2WD, V6, automatic, ext. cab, AM/FM/CD, cruise control, spray-in bedliner, 225/75R15 tires, VIN 1GCCS19E378131947

2004 Dodge Dakota, shows 201,746 miles, 2WD, 4.7L V8, automatic, crew cab, AM/FM/CD, PW, PL, PM, bedliner, VIN 1D7HL38N04S679635

2001 Dodge Ram 1500, shows 205,854 miles, 4WD, 5.2L V8, automatic, quad cab, AM/FM/CD, cruise control, PW, PL, PM, nerf bars, VIN 3B7HF13Y81G237955

Quantity of Parts, Shop Equipment, Tools, Pallet Racking, Poly Tanks, and Misc. Items listed online at

STEFFESGROUP.COM



2245 East Bluegrass Road
Mt. Pleasant, IA 52641

SCAN ME



PRESORTED
MARKETING
US POSTAGE
PAID
PERMIT #315
FARGO, ND